

Document & Workflow Automation for K-12 Education

Electronic documents and processes help K-12 schools meet financial challenges

The demands and expectations for K-12 school systems continue to grow, but, unfortunately, budgets don't. Upland's FileBound document and workflow automation software helps administrators reduce operational expenses while improving responsiveness to students, citizens, government agencies and other schools. By eliminating inefficiency, such as paper-based processes and manual routing, FileBound frees staff to focus on work that matters while reducing costs.

School district across the county use FileBound to:

- **Improve back-office processes** such as human resources (HR), accounting and contract management
- **Securely store, access and share student records** such as transcripts, counseling and disciplinary documents, while automatically enforcing privacy policies to prevent unauthorized access
- **Easily, accurately and completely** comply with state and federal reporting requirements to ensure compliance and maintain funding status
- **Empower district services** such as facilities and transportation to manage documents electronically for more efficient collaboration and disaster recovery
- **Comply with public access laws** for documents such as school board packets with less impact on staff or even via self-service

Benefits

- **Reduces the amount of money and staff time** spent filing, retrieving, copying and sending documents by providing immediate access to electronic files from virtually any location or device
- **Protects the security** of data and documents from threats of all kinds, including unauthorized access or loss due to being misplaced or damaged in a disaster
- **Automates processes** such as invoice approval or HR tracking to ensure compliance, accountability and efficiency
- **Cloud deployment and flexible licensing options** put enterprise-class business technology within reach of budget-conscious school districts
- **Integrates with existing software applications** such as student information systems, accounting/finance packages and human resources, reducing duplicate effort and making it easier for staff to use

Upland's FileBound delivers document and workflow automation applications that improve the operation of any organization by connecting users with the information they need to work more efficiently and effectively.

The Upland Product Family



Automating the flow of work, connecting people through technology and bringing visibility to all aspects of the organization.

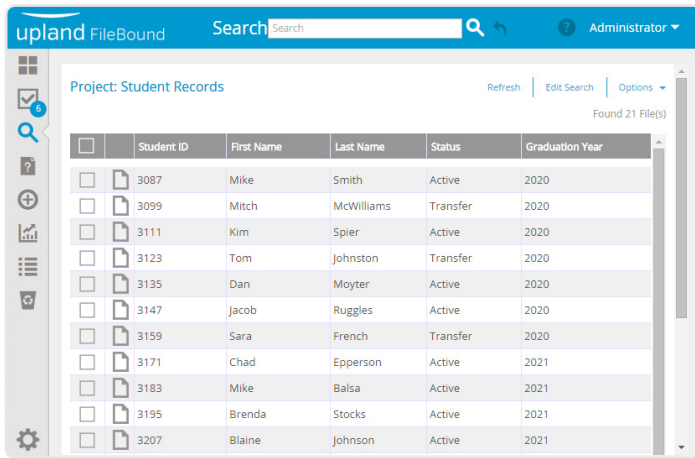
Our family of products helps teams run their operations smoothly, adapt to change quickly and achieve more every day. Each product is built with a specific need in mind. See what you can do with Upland.



See how FileBound delivers game-changing results across the enterprise. Contact Select Imaging at 913-747-2700 or support@selectimagingcorp.com.

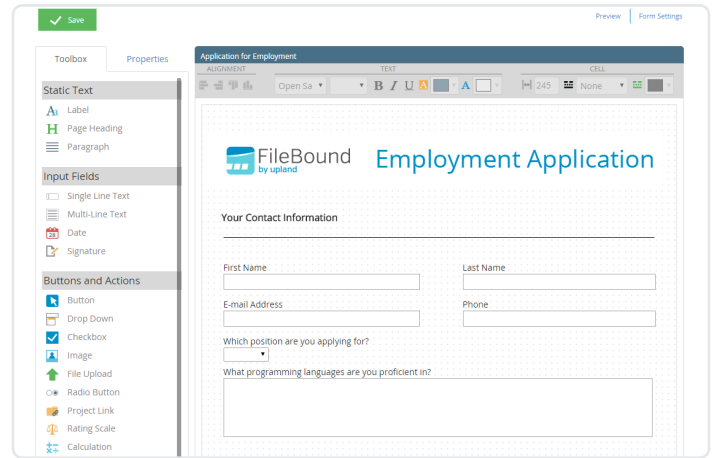
Intuitive Search

Whether you're managing student transcripts, vendor invoices or maintenance contracts, documents are classified the way you want them and available with just a few clicks.



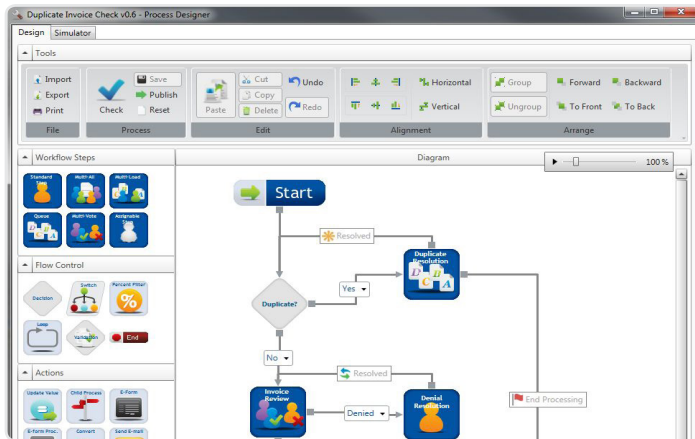
Easily Configurable E-forms

Drag-and-drop form creation tools allow business users to create forms that can be used for internal requests (such as a job requisition) to external ones (such as job applications).



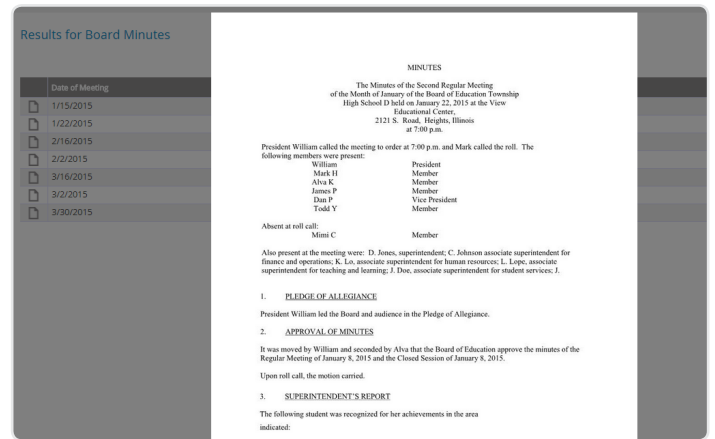
Workflow Automation

Eliminate inefficient email or manual routing of documents that need to go through processes such as approval or review, such as contracts or transfer requests.



Secure Self-service

Deliver immediate document access to people inside or outside of your organization, from allowing limited views of HR records to employees or their supervisors to providing an easy way for citizens to access public records, such as school board packets.



About FileBound

Upland's FileBound delivers document and workflow automation applications that improve the operation of any organization by connecting users with the information they need to work more efficiently and effectively. With FileBound, customers can build automated workflow processes and centrally manage documents to improve compliance, collaboration and access to information.

About Upland Software

Upland is a leading provider of cloud-based Enterprise Work Management software. With more than 1,600 customers around the globe, and over 225,000 users, Upland helps teams in IT, marketing, finance, professional services and process excellence run their operations smoothly, adapt to change quickly and achieve better results every day.